

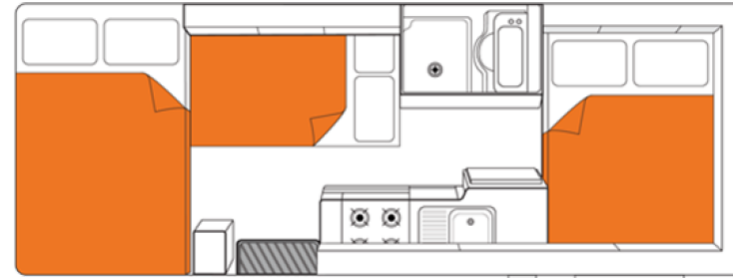
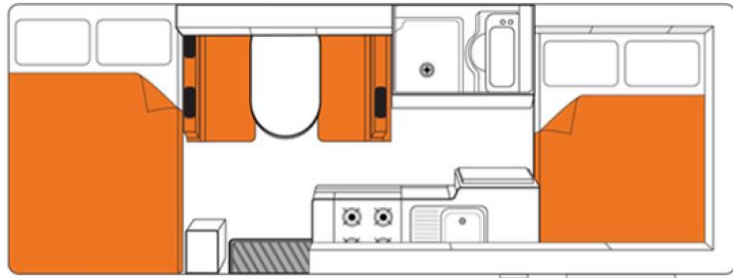
TAKE ME 2  
THE WORLD

# New Zealand Holiday in Motorhome

Take your home along!



# A Holiday with Freedom!



# Campervan Features

## CAPACITY

Passengers	4 adults , 2 children
Beds	Double bed: 2.10m x 1.60m (over cab) Double bed: 1.85m x 1.20m (front dinette) Double bed: 2.10m x 1.52m (fixed rear)

## ENTERTAINMENT

AM/FM Radio	Yes
CD Player	Yes
Aux Input	No

## CAMPERVAN SPECIFICATIONS

Vehicle Age	2014 - 2015 models
Transmission Type	Automatic
Fuel Type	Turbo Diesel
Fuel Capacity	75L
Power Supply	12V battery / 240V mains

## KITCHEN EQUIPMENT

Fridge	Fridge/Freezer
Stove	gas stove
Microwave	Yes
Cooking Utensils	Yes
Crockery/Cutlery	Yes

## LINEN & BEDDING

Doona/Duvet	Yes
Bed Sheet	Yes
Pillow/Pillow Case(s)	Yes
Towel	Yes

Gas Bottle	Gas bottle
Hot/Cold Pressurised Water	Hot & Cold
Fresh Water Tank	82L
Waste Water Tank	82L
Aircon Driver Cab	Yes
Aircon Main Cab	Yes
Heating Driving Cab	Yes
Heating Main Cab	Yes

## CAMPERVAN DIMENSIONS

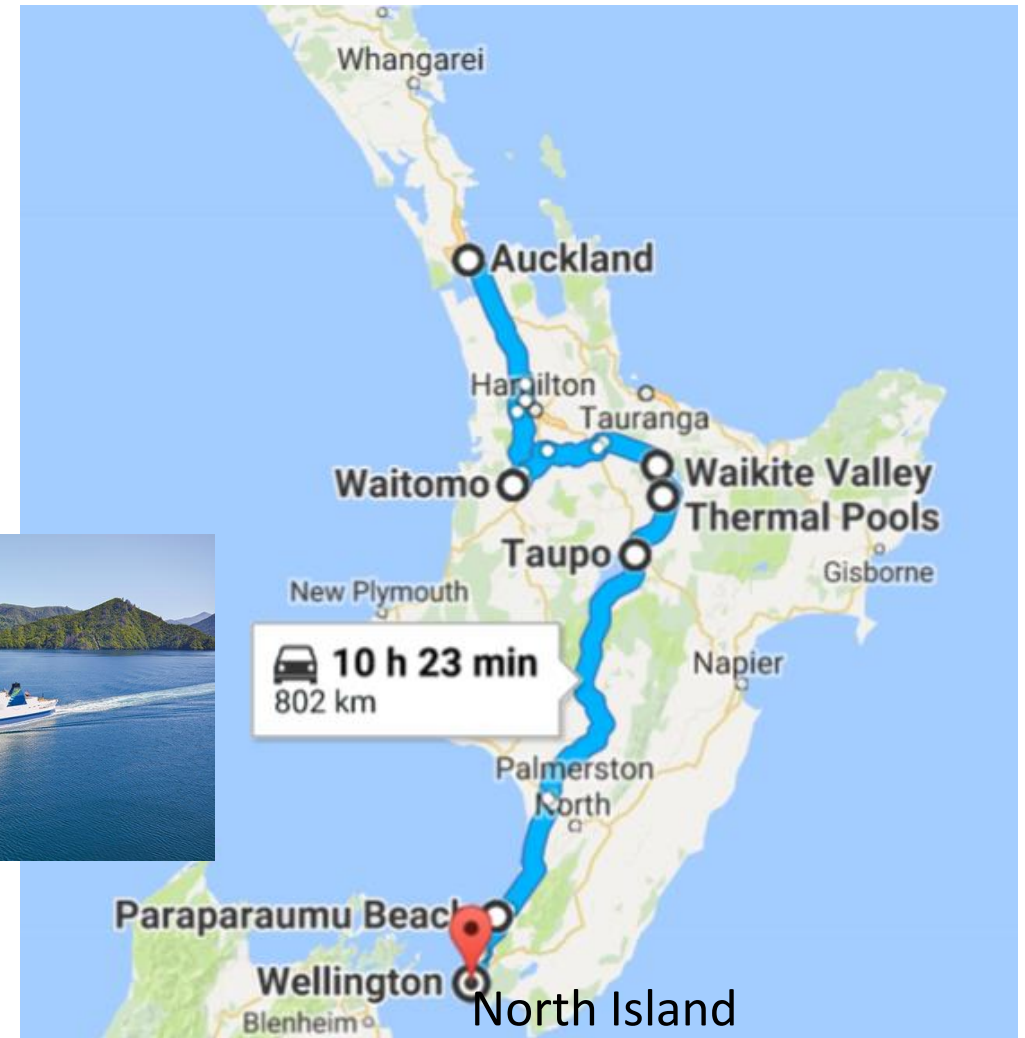
Length	7.25m
--------	-------

# The Route

South Island



Ferry Crossing



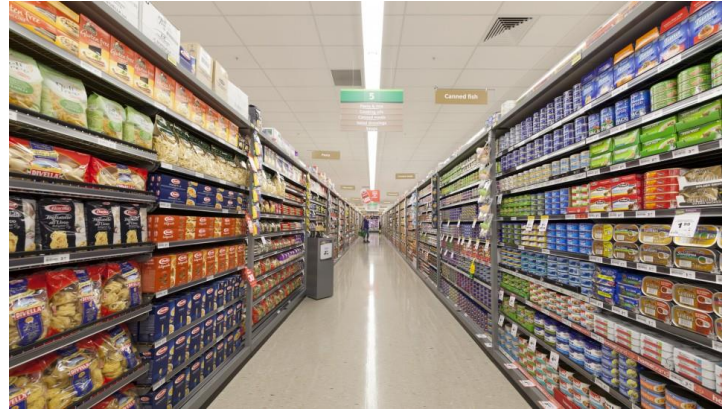
North Island





## Day 1

Arrival in Auckland, transfer, relax in your hotel closer to Airport (Shuttle Transfer included)



## Day 2

Pick up your Motorhome, Shop for grocery, Waitomo Glowworm Caves,  
Overnight in Rotorua





## Day 3

Agroventures adventure park, Maori cultural performance, Land & Lake tour.  
Overnight in Rotorua Top 10 Holiday Park





## Day 4

Great Lake Taupo, Huka Falls lookout,  
Honey Bee Centre. Overnight in Foxton  
Beach Top 10 Holiday Park.





## Day 5

Sunrise in Foxton Beach, Wellington city, Te Papa Museum, Ferry to South Island.  
Overnight in Picton Top 10 Holiday Park.





## Day 6

Scenic drive to Kaikoura, Whale Watching, The world-famous Crayfish lunch on your own at Kaikoura Seafood BBQ Kiosk. Overnight in Christchurch Top 10 Holiday Park





## Day 7

International Antarctic Centre, drive to Lake Tekapo.

---

Overnight in Lake Tekapo Motels & Holiday Park





## Day 8

Mt. Cook, Glacier Explorer Boat Tour, drive to Lake Wanaka, Puzzling World.

---

Overnight in Wanaka Lakeview Holiday Park.





## Day 9

Drive to Queenstown, Jetboat ride, Gondola & Luge, Minus 50 Ice Bar (family-friendly).

Overnight in Queenstown Top 10 Holiday Park





## Day 10

Drive to Milford Sound (epic scenic journey!),  
Scenic Cruise.

---

Overnight in Te Anau Top 10 Holiday Park

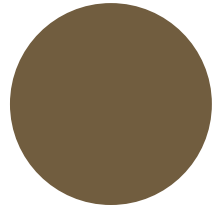
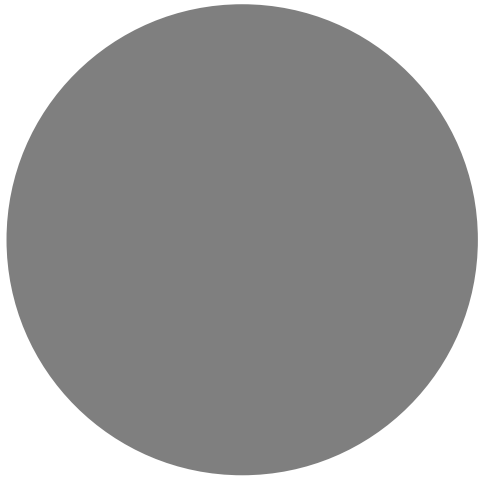




# Day 11

Drive to Queenstown. Drop off the campervan. Fly to Auckland  
Overnight in Auckland Airport Hotel.





Day 12

Shuttle Transfer to Auckland  
International Airport. Departure back  
home with fondest memories!

